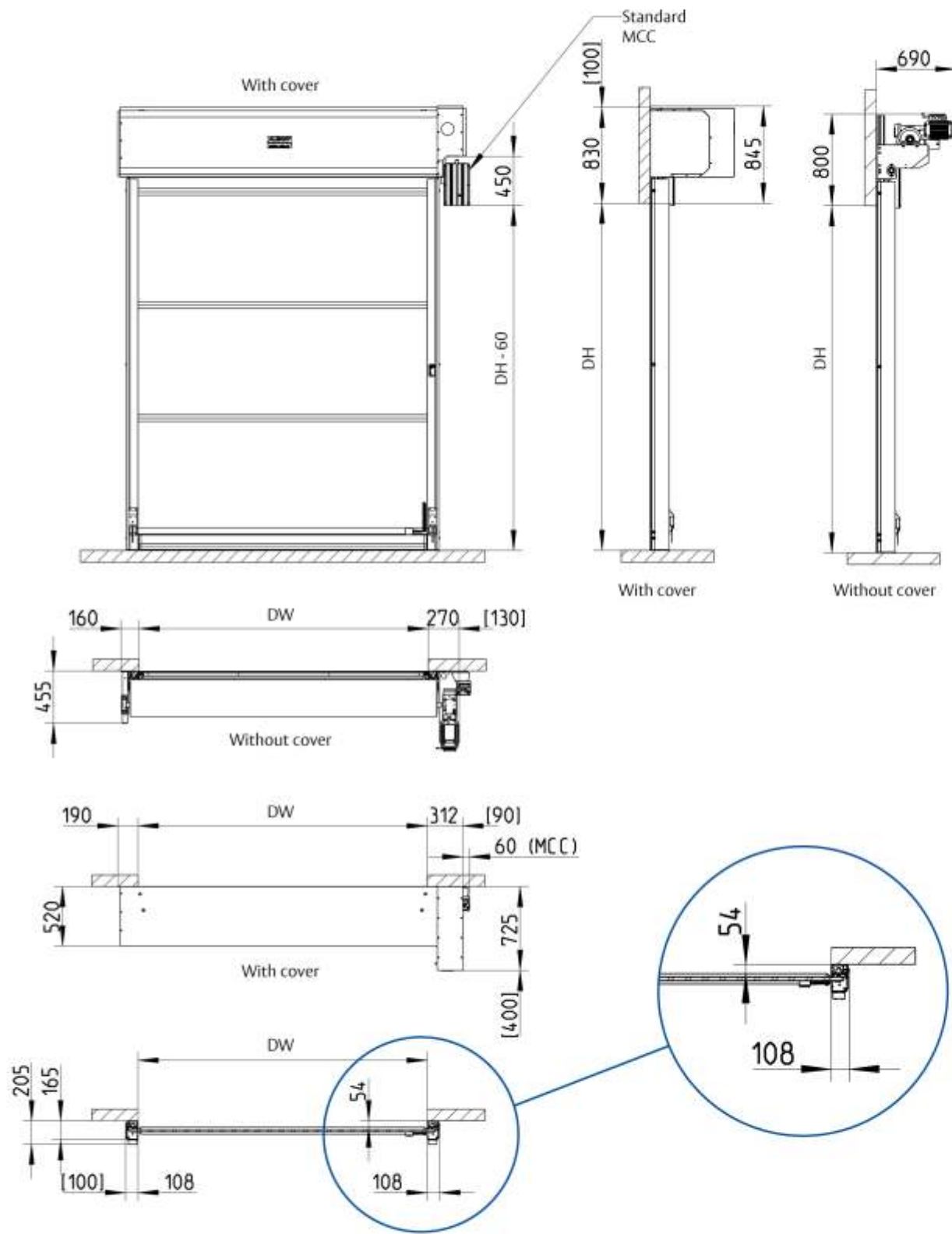


# General drawing/fixing plan Albany RapidRoll® Freeze



**Available sizes:**

	DW	DH
min:	1,000	1,000
max:	3,500	5,200

[ ] = Free assembly space

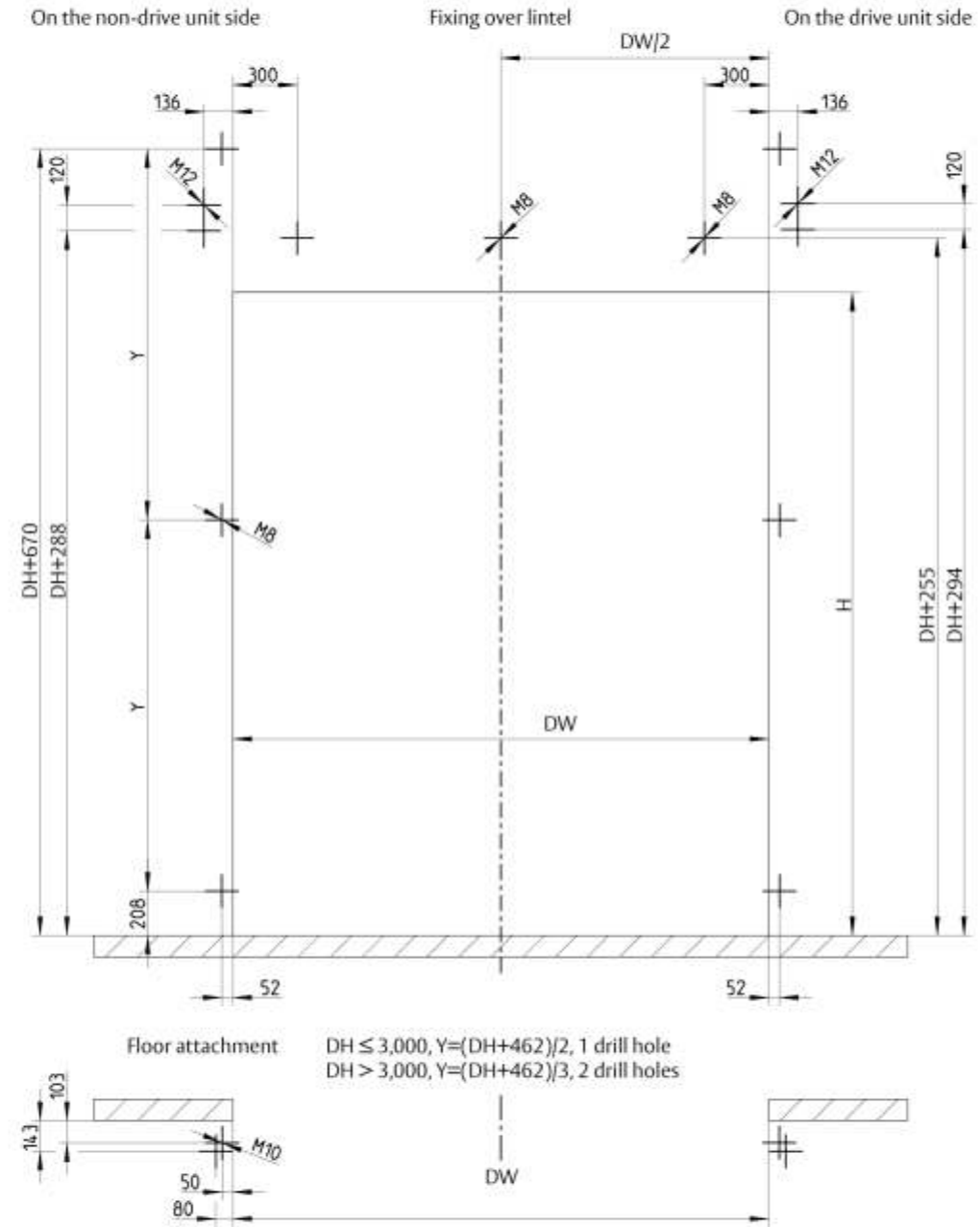
Control system	MCC	MCC
Opening speed	max.(m/s)	2.5
Closing speed	max.(m/s)	1.1
Dimensions WxHxD	mm	-

Drawing no 9300R0010/1  
Last updated: 11.06.2013

ASSA ABLOY Entrance Systems specialises as a leading supplier of automatic entrance systems which ensure efficient flow of vehicles, goods and people. With our global presence, comprehensive range of products and extensive service network we help customers to run their businesses reliably and securely over the long term. ASSA ABLOY Entrance Systems is a business division of ASSA ABLOY.

**ASSA ABLOY**

www.assaabloyentrance.com



Drawing no 9200R0008/0  
Last updated: 11.06.2013



**ASSA ABLOY Entrance Systems**  
High Performance Door Solutions

info.albany@assaabloy.com  
www.assaabloyentrance.com

**NIHVA**  
NIHVA Technologies Pvt. Ltd.

Follow us on  
**YouTube**

# Albany RapidRoll® Freeze

**ASSA ABLOY**

The energy saving door for refrigeration and deep freezing

Technical data sheet

The global leader in door opening solutions



64 100 343/14/01 EN Technical data subject to change without notice © ASSA ABLOY Entrance Systems Ab. All rights reserved.

# Albany RapidRoll® Freeze

- For refrigeration and deep freeze applications
- Can be installed on the inside or outside of cold storage room
- Insulated door curtain
- Heated side frames and bottom plates



## DOOR MATERIAL

The door (side frames, roll cover and motor cover) is made of anodised aluminium.



## DOOR CURTAIN

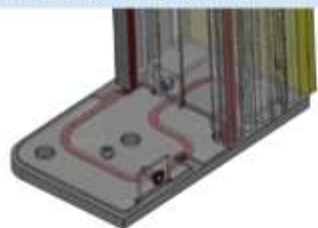
To provide good heat insulation the door curtain consists of a black insulating curtain with horizontal connecting profiles. The curtain is 20 mm thick.



## HEATING IN THE SIDE FRAME AND LINTEL PROFILE

Optional:

When the temperature on the door side or the opposite side  $< -5^{\circ}\text{C}$  and on the other side  $> -5^{\circ}\text{C}$  or  $> -10^{\circ}\text{C}$  and the humidity is  $> 70\%$  the heating in the side frame and lintel profile is used. The photocell will be fitted with a heated lens.



## SAFETY FEATURES

The door is equipped with a flexible electrical safety edge with a coily cable. This is used in combination with a stationary photocell which prevents the door from closing when objects are in the way.



## BOTTOM PROFILE

The bottom profile is made of black insulating material with an additional seal in yellow PVC.



## HEATED PHOTOCELL

Depending on the ambient temperature the door is equipped with a heatable photocell.



## MOTOR AND TOP ROLL COVER

The door is fitted by default with a top roll cover and motor cover.



## DRIVE POSITION

The motor may be mounted on the right or left.

## FREQUENCY CONVERTER CONTROL

The door is equipped with an MCC<sup>Vector Control</sup> frequency converter control system which is either installed under the motor cover or built into the heated control box, depending on the ambient temperature.

## CONTROL UNIT AND MAIN SWITCH

The control unit of the MCC control system has a graphic display and easy-to-use foil keypad. Comprehensive diagnostics and error messages are displayed here. It is either mounted separately on the wall or integrated into the control box.



## MANUAL OPERATION

In the event of a power outage, the door can be manually opened using a crank handle on the motor.

## GEARBOX HEATING

Depending on the ambient temperature and installation site the gearbox is equipped with a heater to prevent the gearbox from freezing (output 50 W at 400 V).

## HEATED CONTROL BOX

If the MCC control system or the control display is installed at  $< -20^{\circ}\text{C}$  they are built in to a heated control box (500 x 500 x 210 mm).



# Cold storage room door Albany RapidRoll® Freeze

Fresh produce, whether vegetables or fruit, and deep frozen food must be transported from the producer to the consumer in an unbroken cold chain. Likewise it is important to store products correctly in climate controlled warehouses which require high energy consumption. In these areas Albany RapidRoll Freeze is the door to use. The Albany RapidRoll Freeze is a high-speed roll-up door with a flexible insulated curtain which was developed specifically for refrigeration and deep freeze applications. The main function in these areas is reducing temperature losses thereby saving energy costs.

## ADVANTAGES OF THE ALBANY RAPIDROLL® FREEZE HIGH-SPEED ROLL-UP DOOR

- Ideal for use between heated and refrigerated/chilled areas
- Temperature range  $-40^{\circ}\text{C} / +40^{\circ}\text{C}$
- Insulated door curtain, the curtain is closely guided
- Optional heated side frames and bottom plates
- Fast opening and closing keeps the exchange of energy low which improves the efficiency of the cold storage room
- Quiet operation, motor safety brake

## DOOR STRUCTURE

The side frames, roll cover and motor cover are made of anodised aluminium. The flexible bottom profile is made of black insulating material with an additional seal in yellow PVC.

## DOOR CURTAIN

The door has a curtain made of a 20 mm thick insulating curtain with horizontal connecting profiles.

## HEATING

Depending on the ambient temperature and installation site the side frames, lintel profile, drive unit and control box are equipped with a heater. Likewise a heated stationary photocell can be used depending on the ambient temperature.

## DRIVE

The drive unit is a geared motor that can be mounted on the right or left.

## CONTROL

The controller is an MCC<sup>Vector Control</sup> frequency converter control system which supports a wide range of speeds, supply voltages and options for connecting control and safety devices.

## MANUAL OPERATION

In the event of a power outage, the door can be manually opened using a crank handle on the motor.

## SAFETY FEATURES

The door complies with the provisions of the German Workplace Ordinance, the German Accident Prevention Regulations (UVV), the harmonised EU directives and EN 13241-1.

## SAFETY ADVICE

The door safety devices are designed for the normal use of power-operated doors in accordance with the harmonised CE directives. In addition, aggravated environmental conditions may affect the proper use of deep freeze doors. In such situations, we recommend that you consult our local sales engineers for expert advice on specific situations.

**NIHVA**

## TECHNICAL DATA

Installation site	Suitable for use in refrigeration and deep freeze applications.
Temperature Range	$-40^{\circ}\text{C}$ to $+40^{\circ}\text{C}$
Fitting side	Both inside the cold storage room and from outside
Wind resistance	Class 0 (EN 12424)
Heat transfer coefficient Door/curtain Complete door 3 x 4 metres	2 W/m <sup>2</sup> K 3 W/m <sup>2</sup> K
Dimensions (DW min./max.) (DH min./max.) Door area	For details see general drawing 1000 / 3500 mm 1,000 / 5,200 mm max. 18.2 m <sup>2</sup>
Noise level	$< 70$ dBA
Direction of movement:	vertical
Drive unit	electric

Finish	
Side frames	Anodised aluminium
Roll cover	Anodised aluminium
Motor cover	Anodised aluminium

Insulating curtain (20 mm) with horizontal connecting profiles	✓
--	---

Control / Drive	
MCC <sup>Vector Control</sup>	✓
Motor power	1.5 kW
Opening/closing speed up to max.	2.5 / 1.1 m/s
On-site safeguards <sup>1)</sup>	10 A
Control voltage	24 VDC
Protection class	IP 55
Mains connection	3/N/PE 380/400/415 V (+/- 10%) 50/60 Hz
AC mains connection <sup>2)</sup>	3/N/PE 220/230/500/440 (+/- 10%) 50/60 Hz 3/N/PE 480 V (-10%/+5%), 50/60 Hz
Potential free contacts max. 250 V	✓

Electrical safety contact bar	✓
Stationary light barrier	✓
Safety brake	✓ In drive unit
Manual operation using an emergency crank handle	✓

Without direction detection	✓
With direction detection	✓
Flashing light	✓
MCC error message	✓ plain text

- Option
  - ✓ Standard
  - Not possible
- 1) 10 A preferred, 16 A max.  
2) With upstream transformer